



AQUATECH



**MASTER**  
ahead of wind

2024







Tersma Co., Ltd. producent osprzętu do jachtów, oferuje produkty dla jachtów regatowych oraz turystycznych. Nasz produkty charakteryzują się doskonałymi właściwościami, perfekcyjnym wykonaniem oraz trwałością.

Przedstawicielem i dystrybutorem firmy Master Tersma jest firma Aquatech.

[www.aquatech.fun](http://www.aquatech.fun)

[www.blokijachtowe.pl](http://www.blokijachtowe.pl)







**Bloki** 6

**Bloki pokładowe** 51

**Podstawy ruchome** 62

**Ringi** 64

**Stopery** 66

**Wózki** 67

**Przedłożki** 67





**Bloki łożyskowane**

**Seria Deluxe**

**Bloki ślizgowe**

**Seria Mini SS**

**Osprzęt dodatkowy**

**Seria Hercules**

**Organizery pokładowe**

**Bloki kierunkowe**

# Bloki łożyskowe



## KOMPOZYTOWE ROLKI

Kompozytowe rolki Derlin osadzone zostały na podwójnym łożyskowaniu dla minimalnych oporów.

Seria ta przeznaczona jest do żeglarstwa wyczynowego. Cechuje ją ultralekka waga, duża wytrzymałość i doskonała trwałość. Rolki wykonane są z kompozytu Derlin® z podwójnym łożyskiem kulkowym. Płyty boczne wykonane są z odpornego na promieniowanie UV kompozytu z włóknem szklanym o wysokiej wytrzymałości.

Dostępne rozmiary bloków od 22 mm do 75 mm w wersji pojedynczej, podwójnej, potrójnej.

## KOMPOZYTOWE ROLKI

Boki bloków zostały wykonane z odpornego na UV kompozytu z dodatkiem włókna szklanego dla bardzo dobrej wytrzymałości i trwałości.



## MOCOWANIE BLOKÓW

Główce obrotowe bloków zostały wykonane ze stali serii 316. Bloki posiadają opatentowany system blokowania w żądanej pozycji.



## Seria 22mm



**BB-2201F**  
**Single Block**  
Lina: 6mm  
SWL : 100 kgs  
MAX: 390 kgs  
Waga: 8 g



**BB-2202F**  
**Single Becket**  
Lina: 6mm  
SWL : 100 kgs  
MAX: 390 kgs  
Waga: 10 g



**BB-2227F**  
**Single Shack**  
Lina: 6mm  
SWL : 100 kgs  
MAX: 390 kgs  
Waga: 18.5 g



**BB-2228F**  
**Single Shack Becket**  
Lina: 6mm  
SWL : 100 kgs  
MAX: 390 kgs  
Waga: 18.5 g



**BB-2209F**  
**Cheek Block**  
Lina: 6mm  
SWL : 100 kgs  
MAX: 390 kgs  
Waga: 9.2 g



**BB-2214F**  
**Connected**  
Lina: 6mm  
SWL : 100 kgs  
MAX: 390 kgs  
Waga: 18 g



**BB-2203F**  
**Double Block**  
Lina: 6mm  
SWL : 100 kgs  
MAX: 390 kgs  
Waga: 27.5 g



**BB-2204F**  
**Double Becket**  
Lina: 6mm  
SWL : 100 kgs  
MAX: 390 kgs  
Waga: 62 g



**BB-2205F**  
**Triple Block**  
Lina: 6mm  
SWL : 100 kgs  
MAX: 390 kgs  
Waga: 41.5 g



**BB-2206F**  
**Triple Cleat**  
Lina: 6mm  
SWL : 100 kgs  
MAX: 390 kgs  
Waga: 42.5 g



**BB-2210F**  
**Single Cleat**  
Lina: 6mm  
SWL : 100 kgs  
MAX: 390 kgs  
Waga: 47 g



**BB-2210FE**  
**Single Angle Cleat**  
Lina: 6mm  
SWL : 100 kgs  
MAX: 390 kgs  
Waga: 52 g





**BB-2211F**  
**Single Bucket Cleat**  
Lina: 6mm  
SWL : 100 kgs  
MAX: 390 kgs  
Waga: 49 g



**BB-2211FE**  
**Single Bucket Angle Cleat**  
Lina: 6mm  
SWL : 100 kgs  
MAX: 390 kgs  
Waga: 54 g



**BB-2212F**  
**Triple Bucket Cleat**  
Lina: 6mm  
SWL : 100 kgs  
MAX: 390 kgs  
Waga: 80 g



**BB-2212FE**  
**Triple Angle Cleat**  
Lina: 6mm  
SWL : 100 kgs  
MAX: 390 kgs  
Waga: 85 g



**BB-2213F**  
**Triple Bucket Cleat**  
Lina: 6mm  
SWL : 100 kgs  
MAX: 390 kgs  
Waga: 81 g



**BB-2213FE**  
**Triple Bucket Angle Cleat**  
Lina: 6mm  
SWL : 100 kgs  
MAX: 390 kgs  
Waga: 86 g



# Seria 29mm



**BB-0201F**  
**Single Block**  
Max Lina: 8mm  
SWL : 160 kgs  
MAX: 500 kgs  
Waga: 25 g



**BB-0202F**  
**Single Becket**  
Max Lina: 8mm  
SWL : 160 kgs  
MAX: 500 kgs  
Waga: 27 g



**BB-0223F**  
**90 Fixed Head**  
Max Lina: 8mm  
SWL : 160 kgs  
MAX: 500 kgs  
Waga: 23 g



**BB-0215F**  
**Single**  
Max Lina: 8mm  
SWL : 160 kgs  
MAX: 500 kgs  
Waga: 17 g



**BB-0217F**  
**Stand Block**  
Max Lina: 8mm  
SWL : 160 kgs  
MAX: 500 kgs  
Waga: 26 g



**BB-0216F**  
**Soft link Block**  
Max Lina: 8mm  
SWL : 160 kgs  
MAX: 500 kgs  
Waga: 15 g  
Rope not included



**BB-0214F**  
**Connected**  
Max Lina: 8mm  
SWL : 160 kgs  
MAX: 500 kgs  
Waga: 35 g



**BB-0209F**  
**Deck Block**  
Max Lina: 8mm  
SWL : 160 kgs  
MAX: 500 kgs  
Waga: 16 g



**BB-0203F**  
**Double**  
Max Lina: 8mm  
SWL : 240 kgs  
MAX: 750 kgs  
Waga: 43 g



**BB-0204F**  
**Double Becket**  
Max Lina: 8mm  
SWL : 240 kgs  
MAX: 750 kgs  
Waga: 46 g



**BB-0205F**  
**Triple Block**  
Max Lina: 8mm  
SWL : 240 kgs  
MAX: 750 kgs  
Waga: 58 g



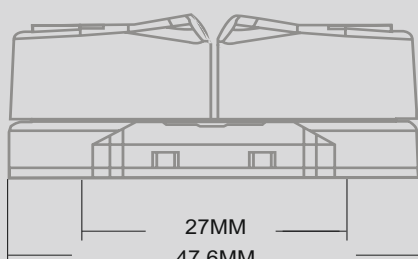
**BB-0206F**  
**Triple Becket**  
Max Lina: 8mm  
SWL : 240 kgs  
MAX: 750 kgs  
Waga: 60 g



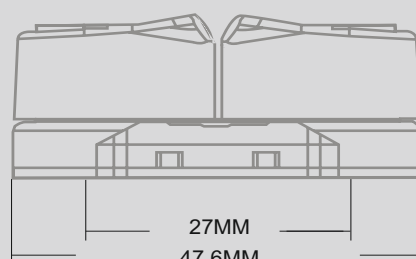
Bloki potrójne tej serii są wyposażone w małe knagi szczękowe:

**MODEL:BC-0601F wersja kompozytowa**

**MODEL:BC-0611F wersja Aluminum**



BC-0601F / 3~6MM Lina / SWL 80 KGS



BC-0611F / 3~6MM Lina / SWL 100 KGS

Dane obciążeń roboczych i zrywających dostępne są w sekcji knag.



**BB-0212F**  
**Blok potrójny z knagą**  
 Max Lina: 8mm  
 SWL : 240 kgs  
 MAX: 750 kgs  
 Waga: 90 g



**BB-0212FE**  
**Blok potrójny z knagą**  
 Max Lina: 8mm  
 SWL : 240 kgs  
 MAX: 750 kgs  
 Waga: 97 g



**BB-0213F**  
**Blok potrójny z knagą i zaczepem**  
 Max Lina: 8mm  
 SWL : 240 kgs  
 MAX: 750 kgs  
 Waga: 92 g



**BB-0213FE**  
**Blok potrójny z knagą i zaczepem**  
 Max Lina: 8mm  
 SWL : 240 kgs  
 MAX: 750 kgs  
 Waga: 98 g



# Seria 40mm



**BB-0423F**  
**90 Fixed Head**  
 Max Lina: 10mm  
 SWL : 230 kgs  
 MAX: 800 kgs  
 Waga: 44 g



**BB-0415F**  
**Single**  
 Max Lina: 10mm  
 SWL : 230 kgs  
 MAX: 800 kgs  
 Waga: 34 g



**BB-0423FR**  
**Removable 90 Fixed Head**  
 Max Lina: 10mm  
 SWL : 230 kgs  
 MAX: 800 kgs  
 Waga: 44 g



**BB-0416F**  
**Soft link Block**  
 Max Lina: 10mm  
 SWL : 230 kgs  
 MAX: 800 kgs  
 Waga: 28 g  
 Rope not included



**BB-0414F**  
**Connected**  
 Max Lina: 10mm  
 SWL : 230 kgs  
 MAX: 800 kgs  
 Waga: 67 g

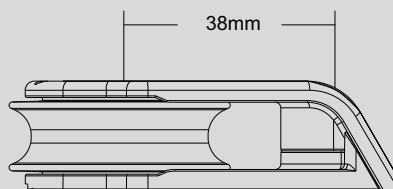


**BB-0417F**  
**Stand Block**  
 Max Lina: 10mm  
 SWL : 230 kgs  
 MAX: 800 kgs  
 Waga: 43 g



**BB-0409F**  
**Deck Block**  
 Max Lina: 10mm  
 SWL : 230 kgs  
 MAX: 800 kgs  
 Waga: 31 g

## Deck block Screws & holes



**BB-0403F**  
**Double Swivel**  
 Max Lina: 10mm  
 SWL : 320 kgs  
 MAX: 1200 kgs  
 Waga: 84 g



**BB-0404F**  
**Double Swivel Becket**  
 Max Lina: 10mm  
 SWL : 320 kgs  
 MAX: 1200 kgs  
 Waga: 86 g



**BB-0407F**  
**Double**  
 Max Lina: 10mm  
 SWL : 320 kgs  
 MAX: 1200 kgs  
 Waga: 72 g



**BB-0408F**  
**Double**  
 Max Lina: 10mm  
 SWL : 320 kgs  
 MAX: 1200 kgs  
 Waga: 76 g



**BB-0405F**  
**Double Becket**  
 Max Lina: 10mm  
 SWL : 320 kgs  
 MAX: 1200 kgs  
 Waga: 119 g



**BB-0405F**  
**Double Becket**  
 Max Lina: 10mm  
 SWL : 320 kgs  
 MAX: 1200 kgs  
 Waga: 119 g



**BB-0408F**  
**Double**  
 Max Lina: 10mm  
 SWL : 320 kgs  
 MAX: 1200 kgs  
 Waga: 76 g



**BB-0405F**  
**Double Becket**  
 Max Lina: 10mm  
 SWL : 320 kgs  
 MAX: 1200 kgs  
 Waga: 119 g



**BB-0408F**  
**Double**  
 Max Lina: 10mm  
 SWL : 320 kgs  
 MAX: 1200 kgs  
 Waga: 76 g



**BB-0419F**  
**Fiddle**  
 Max Lina: 10mm  
 SWL : 230 kgs  
 MAX: 800 kgs  
 Waga: 59 g



**BB-0420F**  
**Fiddle Becket**  
 Max Lina: 10mm  
 SWL : 230 kgs  
 MAX: 800 kgs  
 Waga: 62 g



**BB-0421F**  
**Fiddle Cleat**  
 Max Lina: 10mm  
 SWL : 230 kgs  
 MAX: 800 kgs  
 Waga: 108 g



**BB-0421FE**  
**Fiddle Angle Cleat**  
 Max Lina: 10mm  
 SWL : 230 kgs  
 MAX: 800 kgs  
 Waga: 118 g



**BB-0422F**  
**Fiddle Becket Cleat**  
 Max Lina: 10mm  
 SWL : 320 kgs  
 MAX: 1200 kgs  
 Waga: 112 g



**BB-0422FE**  
**Fiddle Becket Angle Cleat**  
 Max Lina: 10mm  
 SWL : 320 kgs  
 MAX: 1200 kgs  
 Waga: 122 g



**BB-0410F**  
**Single Cleat**  
 Max Lina: 10mm  
 SWL : 230 kgs  
 MAX: 800 kgs  
 Waga: 95 g



**BB-0410FE**  
**Single Angle Cleat**  
Max Lina: 10mm  
SWL : 230 kgs  
MAX: 800 kgs  
Waga: 105 g



**BB-0411F**  
**Single Bucket Cleat**  
Max Lina: 10mm  
SWL : 230 kgs  
MAX: 800 kgs  
Waga: 44 g



**BB-0411FE**  
**Single Bucket Angle Cleat**  
Max Lina: 10mm  
SWL : 230 kgs  
MAX: 800 kgs  
Waga: 34 g



**BB-0412F**  
**Triple Cleat**  
Max Lina: 10mm  
SWL : 320 kgs  
MAX: 1200 kgs  
Waga: 165 g



**BB-0412FE**  
**Triple Angle Cleat**  
Max Lina: 10mm  
SWL : 320 kgs  
MAX: 1200 kgs  
Waga: 172 g

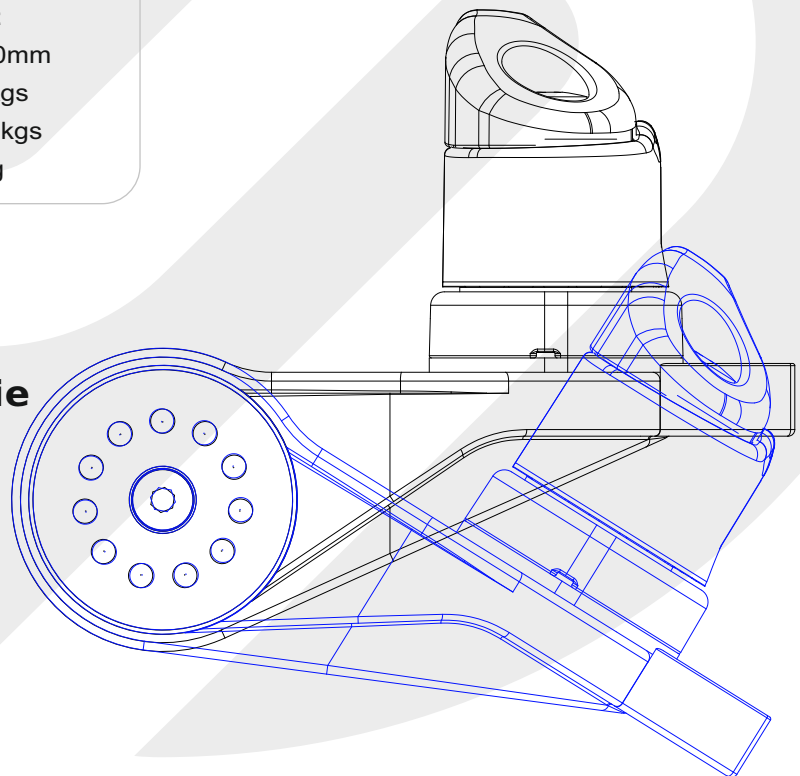


**BB-0413F**  
**Triple Bucket Cleat**  
Max Lina: 10mm  
SWL : 320 kgs  
MAX: 1200 kgs  
Waga: 168 g



**BB-0413FE**  
**Triple Bucket Angle Cleat**  
Max Lina: 10mm  
SWL : 320 kgs  
MAX: 1200 kgs  
Waga: 175 g

**Pozycja/kąt knagi może być regulowana dowolnie według żądanego ustawienia.**









# Seria 57mm



**BB-0501F**  
**Single Block**  
 Max Lina: 10mm  
 SWL : 370 kgs  
 MAX: 1200 kgs  
 Waga: 89 g



**BB-0502F**  
**Single Becket**  
 Max Lina: 10mm  
 SWL : 370 kgs  
 MAX: 1200 kgs  
 Waga: 99 g



**BB-0516F**  
**Soft link Block**  
 Max Lina: 10mm  
 SWL : 370 kgs  
 MAX: 1200 kgs  
 Waga: 60 g  
 Rope not included

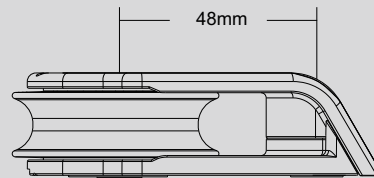


**BB-0509F**  
**Stand Block**  
 Max Lina: 10mm  
 SWL : 370 kgs  
 MAX: 1200 kgs  
 Waga: 70 g



**BB-0503F**  
**Double Block**  
 Max Lina: 10mm  
 SWL : 550 kgs  
 MAX: 1800 kgs  
 Waga: 173 g

## Deck block Screws & holes



**BB-0504F**  
**Double Becket**  
 Max Lina: 10mm  
 SWL : 550 kgs  
 MAX: 1800 kgs  
 Waga: 180 g



**BB-0505F**  
**Triple Block**  
 Max Lina: 10mm  
 SWL : 550 kgs  
 MAX: 1800 kgs  
 Waga: 250 g



**BB-0506F**  
**Triple Becket**  
 Max Lina: 10mm  
 SWL : 550 kgs  
 MAX: 1800 kgs  
 Waga: 260 g



**BB-0518F**  
**Quad Block**  
 Max Lina: 10mm  
 SWL : 550 kgs  
 MAX: 1800 kgs  
 Waga: 330 g



**BB-0510F**  
**Single Cleat**  
 Max Lina: 10mm  
 SWL : 370 kgs  
 MAX: 1200 kgs  
 Waga: 196 g



**BB-0510FE**  
**Single Angle Cleat**  
 Max Lina: 10mm  
 SWL : 370 kgs  
 MAX: 1200 kgs  
 Waga: 206 g





**BB-0511F**  
**Single Becket Cleat**  
 Max Lina: 10mm  
 SWL : 370 kgs  
 MAX: 1200 kgs  
 Waga: 203 g



**BB-0511FE**  
**Single Becket Angle Cleat**  
 Max Lina: 10mm  
 SWL : 370 kgs  
 MAX: 1200 kgs  
 Waga: 213 g



**BB-0512F**  
**Triple Cleat**  
 Max Lina: 10mm  
 SWL : 320 kgs  
 MAX: 1200 kgs  
 Waga: 348 g



**BB-0512FE**  
**Triple Angle Cleat**  
 Max Lina: 10mm  
 SWL : 550 kgs  
 MAX: 1800 kgs  
 Waga: 361 g



**BB-0513F**  
**Triple Becket Cleat**  
 Max Lina: 10mm  
 SWL : 550 kgs  
 MAX: 1800 kgs  
 Waga: 365 g



**BB-0413FE**  
**Triple Becket Angle Cleat**  
 Max Lina: 10mm  
 SWL : 550 kgs  
 MAX: 1800 kgs  
 Waga: 378 g

## Seria 57mm bloki kabestanowe



XRA-5501F



Kabestanowe  
leżące

96.5mm  
3 3/4"

RA-0509F-L/R



# Seria 72mm



**BB-0701F**  
**Single Block**  
Max Lina: 14mm  
SWL : 560 kgs  
MAX: 1700 kgs  
Waga: 190 g



**BB-0702F**  
**Single Becket**  
Max Lina: 14mm  
SWL : 560 kgs  
MAX: 1700 kgs  
Waga: 212 g



**BB-0703F**  
**Double Block**  
Max Lina: 14mm  
SWL : 840 kgs  
MAX: 2550 kgs  
Waga: 347 g



**BB-0704F**  
**Double Becket Cleat**  
Max Lina: 14mm  
SWL : 840 kgs  
MAX: 2550 kgs  
Waga: 366 g



**BB-0705F**  
**Triple Block**  
Max Lina: 14mm  
SWL : 840 kgs  
MAX: 2550 kgs  
Waga: 495 g



**BB-0706F**  
**Triple Becket Cleat**  
Max Lina: 14mm  
SWL : 840 kgs  
MAX: 2550 kgs  
Waga: 515 g



**BB-0710F**  
**Single Cleat**  
Max Lina: 14mm  
SWL : 560 kgs  
MAX: 1700 kgs  
Waga: 361 g



**BB-0710FE**  
**Single Angle Cleat**  
Max Lina: 14mm  
SWL : 560 kgs  
MAX: 1700 kgs  
Waga: 365 g



**BB-0711F**  
**Single Becket Cleat**  
Max Lina: 14mm  
SWL : 560 kgs  
MAX: 1700 kgs  
Waga: 378 g



**BB-0711FE**  
**Single Becket Angle Cleat**  
Max Lina: 14mm  
SWL : 560 kgs  
MAX: 1700 kgs  
Waga: 365 g



**BB-0701F**  
**Single Block**  
Max Lina: 14mm  
SWL : 560 kgs  
MAX: 1700 kgs  
Waga: 190 g



**BB-0702F**  
**Single Becket**  
Max Lina: 14mm  
SWL : 560 kgs  
MAX: 1700 kgs  
Waga: 212 g





**BB-0703F**  
**Double Block**  
 Max Lina: 14mm  
 SWL : 840 kgs  
 MAX: 2550 kgs  
 Waga: 347 g



**BB-0704F**  
**Double Becket Cleat**  
 Max Lina: 14mm  
 SWL : 840 kgs  
 MAX: 2550 kgs  
 Waga: 366 g



**BB-0705F**  
**Triple Block**  
 Max Lina: 14mm  
 SWL : 840 kgs  
 MAX: 2550 kgs  
 Waga: 495 g



**BB-0706F**  
**Triple Becket Cleat**  
 Max Lina: 14mm  
 SWL : 840 kgs  
 MAX: 2550 kgs  
 Waga: 515 g



**BB-0703F**  
**Double Block**  
 Max Lina: 14mm  
 SWL : 840 kgs  
 MAX: 2550 kgs  
 Waga: 347 g



**BB-0704F**  
**Double Becket Cleat**  
 Max Lina: 14mm  
 SWL : 840 kgs  
 MAX: 2550 kgs  
 Waga: 366 g



**BB-0705F**  
**Triple Block**  
 Max Lina: 14mm  
 SWL : 840 kgs  
 MAX: 2550 kgs  
 Waga: 495 g



**BB-0706F**  
**Triple Becket Cleat**  
 Max Lina: 14mm  
 SWL : 840 kgs  
 MAX: 2550 kgs  
 Waga: 515 g





**BB-0702F**  
**Single Becket**  
Max Lina: 14mm  
SWL : 560 kgs  
MAX: 1700 kgs  
Waga: 212 g



**BB-0702F**  
**Single Becket**  
Max Lina: 14mm  
SWL : 560 kgs  
MAX: 1700 kgs  
Waga: 212 g







Seria Deluxe to hybrydowa seria złożona z bloków łożyskowanych kompozytowych wzmocnionych stalą nierdzewną 316. Cechuje ją ultralekka waga, duża wytrzymałość i doskonała trwałość.

Dostępne rozmiary bloków od 29 mm do 75 mm.

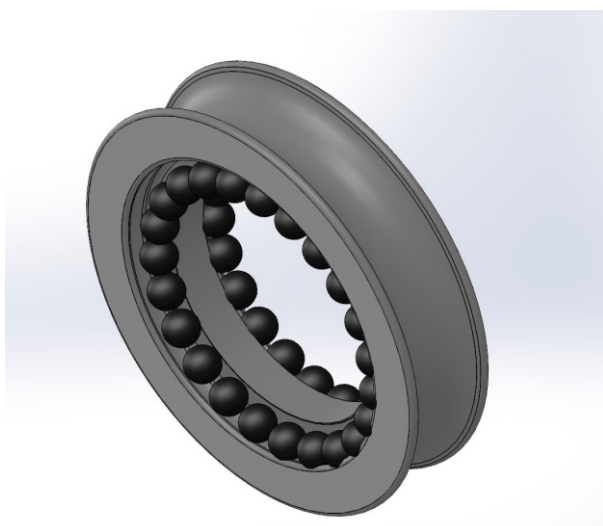
## KOMPOZYTOWE ROLKI

Boki bloków zostały wykonane z odpornego na UV kompozytu z dodatkiem włókna szklanego dla bardzo dobrej wytrzymałości i trwałości.



## KOMPOZYTOWE ROLKI

Kompozytowe rolki Derlin osadzone zostały na podwójnym łożyskowaniu dla minimalnych oporów.



## MOCOWANIE BLOKÓW

Główce obrotowe bloków zostały wykonane ze stali serii 316. Bloki posiadają opatentowany system blokowania w żądanej pozycji.

## Seria 29mm



**SPB-2901F**  
**Single Block**  
 Max Lina: 8mm  
 SWL : 180 kgs  
 MAX: 900 kgs  
 Waga: 30 g



**SPB-2902F**  
**Single Becket**  
 Max Lina: 8mm  
 SWL : 180 kgs  
 MAX: 900 kgs  
 Waga: 41 g



**SPB-2911F**  
**Single**  
 Max Lina: 8mm  
 SWL : 180 kgs  
 MAX: 900 kgs  
 Waga: 23 g



**SPB-2912F**  
**Single Becket Cleat**  
 Max Lina: 8mm  
 SWL : 180- kgs  
 MAX: 900 kgs  
 Waga: 29 g



**SPB-2909F**  
**Cheek**  
 Max Lina: 8mm  
 SWL : 180 kgs  
 MAX: 900 kgs  
 Waga: 28 g



**SPB-2919F**  
**Cheek Pivot**  
 Max Lina: 8mm  
 SWL : 180 kgs  
 MAX: 900 kgs  
 Waga: 25 g



**SPB-2903F**  
**Double Block**  
 Max Lina: 8mm  
 SWL : 270 kgs  
 MAX: 1350 kgs  
 Waga: g



**SPB-2904F**  
**Double Becket Cleat**  
 Max Lina: 8mm  
 SWL : 270 kgs  
 MAX: 1350 kgs  
 Waga: 69 g



**SPB-2905F**  
**Triple Block**  
 Max Lina: 8mm  
 SWL : 270 kgs  
 MAX: 1350 kgs  
 Waga: 94 g



**SPB-2906F**  
**Triple Becket Cleat**  
 Max Lina: 8mm  
 SWL : 270 kgs  
 MAX: 1350 kgs  
 Waga: 101 g



**SPB-2917F**  
**Single Exit**  
 Max Lina: 8mm  
 SWL : 180 kgs  
 MAX: 900 kgs  
 Waga: 30 g



**SPB-2918F**  
**Double Exit**  
 Max Lina: 8mm  
 SWL : 180 kgs  
 MAX: 900 kgs  
 Waga: 41 g





### SPB-2921F

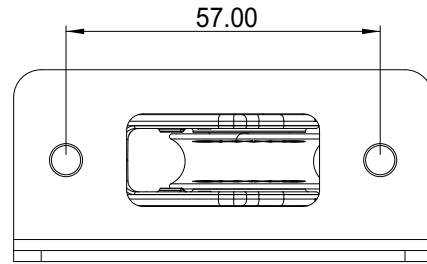
#### Exit Cleat

Max Lina: 8mm

SWL : 180 kgs

MAX: 900 kgs

Waga: 161 g



### SPB-2915F

#### Single Upright Lead

Max Lina: 8mm

SWL : 180 kgs

MAX: 900 kgs

Waga: 62 g



### SPB-2916F

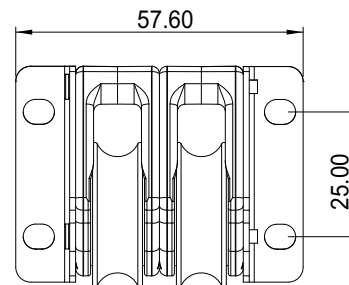
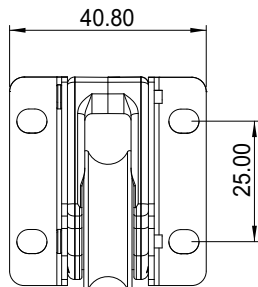
#### Double Upright Lead

Max Lina: 8mm

SWL : 180 kgs

MAX: 900 kgs

Waga: 84 g



### SPB-2910F

#### Swivel Exit

Max Lina: 8mm

SWL : 270 kgs

MAX: 1350 kgs

Waga: 121 g



### SPB-2920F

#### Swivel Becket Exit

Max Lina: 8mm

SWL : 270 kgs

MAX: 1350 kgs

Waga: 116 g



**Pozycja/kąt knagi może być regulowana dowolnie według żądanego ustawienia.**

# Seria 38mm



**SPB-3801F**  
**Single Block**  
 Max Lina: 10mm  
 SWL : 180 kgs  
 MAX: 900 kgs  
 Waga: 30 g



**SPB-3802F**  
**Single Becket**  
 Max Lina: 10mm  
 SWL : 180 kgs  
 MAX: 900 kgs  
 Waga: 41 g



**SPB-3811F**  
**Single**  
 Max Lina: 10mm  
 SWL : 180 kgs  
 MAX: 900 kgs  
 Waga: 23 g



**SPB-3812F**  
**Single Becket Cleat**  
 Max Lina: 10mm  
 SWL : 180- kgs  
 MAX: 900 kgs  
 Waga: 29 g



**SPB-3813F**  
**Single Swivel**  
 Max Lina: 10mm  
 SWL : 180 kgs  
 MAX: 900 kgs  
 Waga: 28 g



**SPB-3814F**  
**Cheek Pivot**  
 Max Lina: 8mm  
 SWL : 180 kgs  
 MAX: 900 kgs  
 Waga: 25 g



**SPB-3803F**  
**Double Block**  
 Max Lina: 8mm  
 SWL : 270 kgs  
 MAX: 1350 kgs  
 Waga: g



**SPB-3804F**  
**Double Becket Cleat**  
 Max Lina: 8mm  
 SWL : 270 kgs  
 MAX: 1350 kgs  
 Waga: 69 g



**SPB-3805F**  
**Triple Block**  
 Max Lina: 8mm  
 SWL : 270 kgs  
 MAX: 1350 kgs  
 Waga: 94 g



**SPB-3806F**  
**Triple Becket Cleat**  
 Max Lina: 8mm  
 SWL : 270 kgs  
 MAX: 1350 kgs  
 Waga: 101 g



**SPB-3819F**  
**Fixed Lead**  
 Max Lina: 10mm  
 SWL : 180 kgs  
 MAX: 900 kgs  
 Waga: 30 g



**SPB-3809F**  
**Cheek**  
 Max Lina: 10mm  
 SWL : 180 kgs  
 MAX: 900 kgs  
 Waga: 41 g





**SPB-3810F**  
**Swivel Exit Cleat**  
 Max Lina: 10mm  
 SWL : 180 kgs  
 MAX: 900 kgs  
 Waga: 195 g



**SPB-3815F**  
**Single Upright Lead**  
 Max Lina: 10mm  
 SWL : 180- kgs  
 MAX: 900 kgs  
 Waga: 29 g



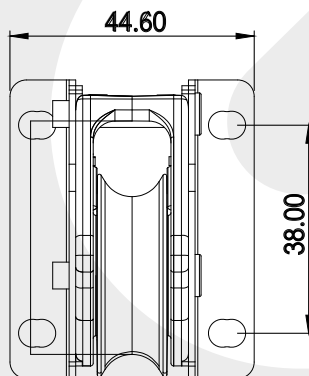
**SPB-3816F**  
**Single Swivel**  
 Max Lina: 10mm  
 SWL : 180 kgs  
 MAX: 900 kgs  
 Waga: 28 g



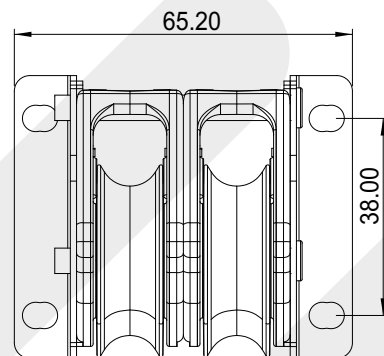
**SPB-3807F**  
**Cheek Pivot**  
 Max Lina: 8mm  
 SWL : 180 kgs  
 MAX: 900 kgs  
 Waga: 25 g



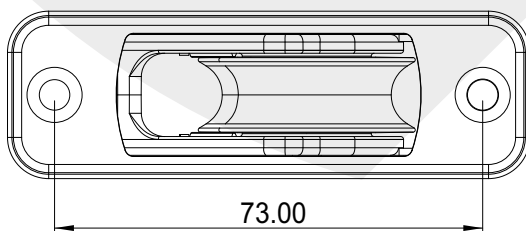
**SPB-3808F**  
**Double Block**  
 Max Lina: 8mm  
 SWL : 270 kgs  
 MAX: 1350 kgs  
 Waga: g



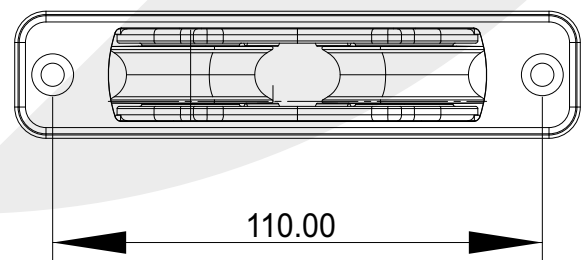
**SPB-3815F**



**SPB-3816F**



**SPB-3807F**



**SPB-3808F**

# Seria 57mm



**SPB-5701F**  
**Single Block**  
 Max Lina: 12mm  
 SWL : 180 kgs  
 MAX: 900 kgs  
 Waga: 30 g



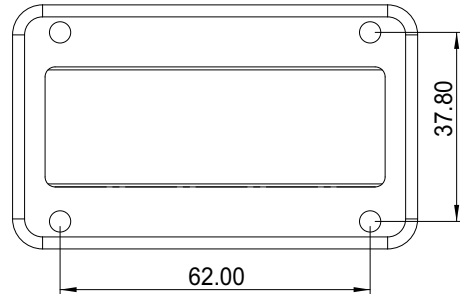
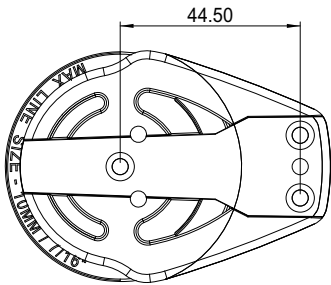
**SPB-5702F**  
**Single Becket**  
 Max Lina: 12mm  
 SWL : 180 kgs  
 MAX: 900 kgs  
 Waga: 41 g



**SPB-5709F**  
**Cheek**  
 Max Lina: 12mm  
 SWL : 180 kgs  
 MAX: 900 kgs  
 Waga: 23 g



**SPB-5724F**  
**Deck Exit**  
 Max Lina: 12mm  
 SWL : 180- kgs  
 MAX: 900 kgs  
 Waga: 29 g



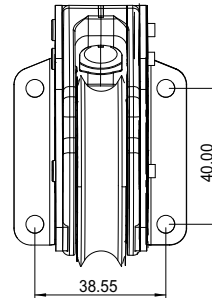
**SPB-5703F**  
**Double Block**  
 Max Lina: 8mm  
 SWL : 270 kgs  
 MAX: 1350 kgs  
 Waga: g



**SPB-5704F**  
**Double Becket Cleat**  
 Max Lina: 8mm  
 SWL : 270 kgs  
 MAX: 1350 kgs  
 Waga: 69 g



**SPB-5714F**  
**Double**  
 Max Lina: 12mm  
 SWL : 180 kgs  
 MAX: 900 kgs  
 Waga: 28 g







**SPB-7601F**  
**Single Block**  
 Max Lina: 14mm  
 SWL : 1000 kgs  
 MAX: 2000 kgs  
 Waga: 175 g



**SPB-7602F**  
**Single Becket**  
 Max Lina: 14mm  
 SWL : 1000 kgs  
 MAX: 2000 kgs  
 Waga: 298 g



**SPB-7603F**  
**Double**  
 Max Lina: 14mm  
 SWL : 1000 kgs  
 MAX: 2000 kgs  
 Waga: 648 g



**SPB-7604F**  
**Single Becket Cleat**  
 Max Lina: 14mm  
 SWL : 1000 kgs  
 MAX: 2000 kgs  
 Waga: 658 g



**SPB-7605F**  
**Triple Block**  
 Max Lina: 14mm  
 SWL : 180 kgs  
 MAX: 900 kgs  
 Waga: 856 g



**SPB-7609F**  
**Cheek Pivot**  
 Max Lina: 8mm  
 SWL : 180 kgs  
 MAX: 900 kgs  
 Waga: 25 g



**SPB-7606F**  
**Triple Fiddle**  
 Max Lina: 8mm  
 SWL : 270 kgs  
 MAX: 1350 kgs  
 Waga: g



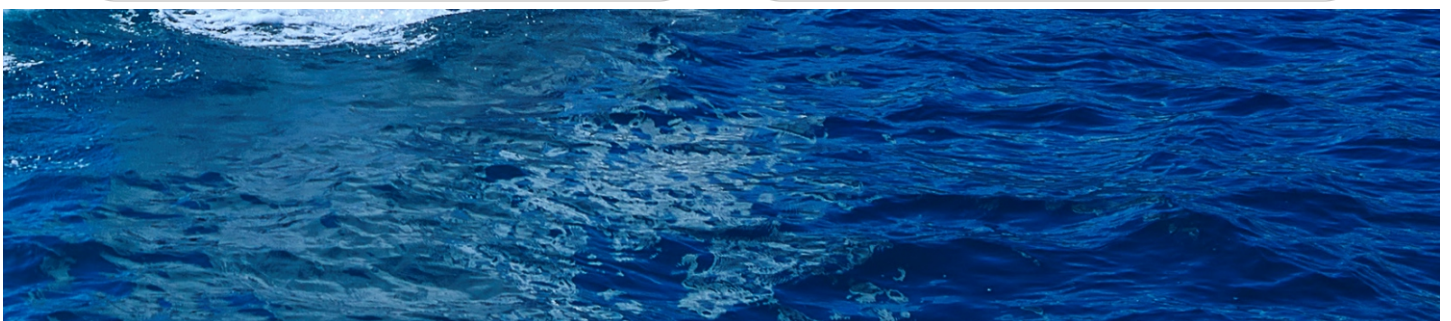
**SPB-7619F**  
**Single Fiddle**  
 Max Lina: 8mm  
 SWL : 270 kgs  
 MAX: 1350 kgs  
 Waga: 69 g



**SPB-7620HL**  
**Single Fiddle Becket**  
 Max Lina: 8mm  
 SWL : 270 kgs  
 MAX: 1350 kgs  
 Waga: 94 g



**SPB-7607F**  
**Single**  
 Max Lina: 8mm  
 SWL : 270 kgs  
 MAX: 1350 kgs  
 Waga: 101 g







**MASTER**  
ahead of wind



Tersma high-performance plain bearing blocks are designed for a wide range of applications. These blocks include a 316 stainless steel free-spin bushing, which minimizes friction and enhances efficiency for smooth rotation. They feature a 316 stainless steel shackle and high-density glass fiber construction, ensuring both lightweight design and extended service life.



### Strong Material

Sideplates are made of UV resistant Nylon composite with glass fibers for strength and durability

### THE COMPOSITE SHEAVE

The Derlin sheave runs on free-spin 316 stainless steel bush.



### THE SWIVEL HEAD

The swivel head is made of 316 stainless steel. A patented swivel lock system can be simply engaged in either two directions or just free to swivel.



## Seria 35mm

35mm blocks are versatile and suitable for sailboards, dinghies, and various control line configurations. The safe working load and breaking load of cleat models depend on the strength of the cleats.



**BP-3501F**  
**Single Block**  
Max Lina: 8mm  
SWL : 300 kgs  
MAX: 600 kgs  
Waga: 36 g



**BP-3502F**  
**Single Bocket**  
Max Lina: 8mm  
SWL : 300 kgs  
MAX: 600 kgs  
Waga: 42 g



**BP-3519F**  
**Double**  
Max Lina: 8mm  
SWL : 300 kgs  
MAX: 600 kgs  
Waga: 46 g



**BP-3520F**  
**Single Bocket Cleat**  
Max Lina: 8mm  
SWL : 300 kgs  
MAX: 600 kgs  
Waga: 50 g



**BP-3511F**  
**Single Bocket Cleat**  
Max Lina: 8mm  
SWL : 300 kgs  
MAX: 600 kgs  
Waga: 94 g



**BP-3511FE**  
**Single Bocket Angle Cleat**  
Max Lina: 8mm  
SWL : 300 kgs  
MAX: 600 kgs  
Waga: 100 g



**BP-3521F**  
**Single Fiddle Cleat**  
Max Lina: 8mm  
SWL : 300 kgs  
MAX: 600 kgs  
Waga: 98 g



**BP-3521FE**  
**Single Fiddle Angle Cleat**  
Max Lina: 8mm  
SWL : 300 kgs  
MAX: 600 kgs  
Waga: 104 g



**BP-3522F**  
**Triple Fiddle**  
Max Lina: 8mm  
SWL : 300 kgs  
MAX: 600 kgs  
Waga: 102 g



**BP-3522FE**  
**Single Fiddle**  
Max Lina: 8mm  
SWL : 300 kgs  
MAX: 600 kgs  
Waga: 108 g





**BP-3503F**  
**Single Block**  
 Max Lina: 8mm  
 SWL : 180 kgs  
 MAX: 900 kgs  
 Waga: 30 g



**BP-3504F**  
**Single Becket**  
 Max Lina: 8mm  
 SWL : 180 kgs  
 MAX: 900 kgs  
 Waga: 41 g



**BP-3505F**  
**Single**  
 Max Lina: 8mm  
 SWL : 180 kgs  
 MAX: 900 kgs  
 Waga: 23 g



**BP-3513F**  
**Single Becket Cleat**  
 Max Lina: 8mm  
 SWL : 180- kgs  
 MAX: 900 kgs  
 Waga: 29 g



**BP-3513FE**  
**Cheek**  
 Max Lina: 8mm  
 SWL : 180 kgs  
 MAX: 900 kgs  
 Waga: 28 g



# Seria 50mm



**BP-0501F**  
**Single Block**  
Max Lina: 10mm  
SWL : 522 kgs  
MAX: 1050 kgs  
Waga: 70 g



**BP-0507F**  
**Toggle Head**  
Max Lina: 10mm  
SWL : 522 kgs  
MAX: 1050 kgs  
Waga: 83 g



**BP-0502F**  
**Single Becket**  
Max Lina: 10mm  
SWL : 522 kgs  
MAX: 1050 kgs  
Waga: 96 g



**BP-0503F**  
**Double**  
Max Lina: 10mm  
SWL : 783 kgs  
MAX: 1575 kgs  
Waga: 125 g



**BP-0504F**  
**Single Becket Cleat**  
Max Lina: 10mm  
SWL : 450 kgs  
MAX: 1575 kgs  
Waga: 134 g



**BP-0505F**  
**Single Becket Cleat**  
Max Lina: 10mm  
SWL : 810 kgs  
MAX: 1890 kgs  
Waga: 179 g



**BP-0519F**  
**Fiddle**  
Max Lina: 10mm  
SWL : 522 kgs  
MAX: 1050 kgs  
Waga: 130 g



**BP-0520F**  
**Single Becket Cleat**  
Max Lina: 10mm  
SWL : 522 kgs  
MAX: 1050 kgs  
Waga: 109 g



**BP-0511F**  
**Single Becket Cleat**  
Max Lina: 10mm  
SWL : 522 kgs  
MAX: 1050 kgs  
Waga: 184 g



**BP-0511FE**  
**Single Becket Angle Cleat**  
Max Lina: 10mm  
SWL : 522 kgs  
MAX: 1050 kgs  
Waga: 187 g



**BP-0521F**  
**Single Fiddle Cleat**  
Max Lina: 10mm  
SWL : 522 kgs  
MAX: 1050 kgs  
Waga: 195 g



**BP-0521FE**  
**Single Fiddle Angle Cleat**  
Max Lina: 10mm  
SWL : 522 kgs  
MAX: 1050 kgs  
Waga: 206 g





**BP-0522F**  
**Triple Fiddle**  
 Max Lina: 10mm  
 SWL : 522 kgs  
 MAX: 1050 kgs  
 Waga: 200 g



**BP-0522FE**  
**Single Fiddle**  
 Max Lina: 10mm  
 SWL : 522 kgs  
 MAX: 1050 kgs  
 Waga: 204 g



**BP-0512F**  
**Triple**  
 Max Lina: 10mm  
 SWL : 810 kgs  
 MAX: 1890 kgs  
 Waga: ? g



**BP-0512FE**  
**Single Fiddle**  
 Max Lina: 10mm  
 SWL : 522 kgs  
 MAX: 1050 kgs  
 Waga: 204 g



**BP-0513F**  
**Triple**  
 Max Lina: 10mm  
 SWL : 810 kgs  
 MAX: 1890 kgs  
 Waga: ? g



**BP-0513FE**  
**Triple**  
 Max Lina: 10mm  
 SWL : 810 kgs  
 MAX: 1890 kgs  
 Waga: ? g



## Seria 60mm



**BP-0601F**  
**Single Block**  
Max Lina: 12mm  
SWL : 600 kgs  
MAX: 1200 kgs  
Waga: 125 g



**BP-0607F**  
**Toggle Head**  
Max Lina: 12mm  
SWL : 600 kgs  
MAX: 1200 kgs  
Waga: 131 g



**BP-0602F**  
**Single Becket**  
Max Lina: 12mm  
SWL : 600 kgs  
MAX: 1200 kgs  
Waga: 96 g



**BP-0603F**  
**Double**  
Max Lina: 12mm  
SWL : 780 kgs  
MAX: 1560 kgs  
Waga: 200 g



**BP-0604F**  
**Double Becket**  
Max Lina: 12mm  
SWL : 780 kgs  
MAX: 1560 kgs  
Waga: 220 g



**BP-0605F**  
**Triple**  
Max Lina: 12mm  
SWL : 900 kgs  
MAX: 1800 kgs  
Waga: 282 g



**BP-0619F**  
**Fiddle**  
Max Lina: 12mm  
SWL : 600 kgs  
MAX: 1200 kgs  
Waga: 167 g



**BP-0620F**  
**Single Becket Cleat**  
Max Lina: 12mm  
SWL : 600 kgs  
MAX: 1200 kgs  
Waga: 178 g



**BP-0611F**  
**Single Becket Cleat**  
Max Lina: 12mm  
SWL : 600 kgs  
MAX: 1200 kgs  
Waga: 252 g



**BP-0611FE**  
**Single Becket Angle Cleat**  
Max Lina: 12mm  
SWL : 600 kgs  
MAX: 1200 kgs  
Waga: 260 g



**BP-0621F**  
**Single Fiddle Cleat**  
Max Lina: 12mm  
SWL : 600 kgs  
MAX: 1200 kgs  
Waga: 273 g



**BP-0621FE**  
**Single Fiddle Angle Cleat**  
Max Lina: 12mm  
SWL : 600 kgs  
MAX: 1200 kgs  
Waga: 281 g





**BP-0622F**  
**Triple Fiddle**  
Max Lina: 12mm  
SWL : 600 kgs  
MAX: 1200 kgs  
Waga: 285 g



**BP-0622FE**  
**Single Fiddle**  
Max Lina: 12mm  
SWL : 600 kgs  
MAX: 1200 kgs  
Waga: 293 g



**BP-0612F**  
**Triple**  
Max Lina: 12mm  
SWL : 900 kgs  
MAX: 1800 kgs  
Waga: 395 g



**BP-0612FE**  
**Single Fiddle**  
Max Lina: 12mm  
SWL : 900 kgs  
MAX: 1800 kgs  
Waga: 406 g



**BP-0613F**  
**Triple**  
Max Lina: 12mm  
SWL : 900 kgs  
MAX: 1800 kgs  
Waga: 416 g



**BP-0613FE**  
**Triple**  
Max Lina: 12mm  
SWL : 900 kgs  
MAX: 1800 kgs  
Waga: 426 g



# Seria 72mm



**BP-7201F**  
**Single Block**  
 Max Lina: 12mm  
 SWL : 1000 kgs  
 MAX: 2000 kgs  
 Waga: 218 g



**BP-7207F**  
**Toggle Head**  
 Max Lina: 12mm  
 SWL : 1000 kgs  
 MAX: 2000 kgs  
 Waga: 131 g



**BP-7202F**  
**Single Becket**  
 Max Lina: 12mm  
 SWL : 1000 kgs  
 MAX: 2000 kgs  
 Waga: 96 g



**BP-0703F**  
**Double**  
 Max Lina: 12mm  
 SWL : 1300 kgs  
 MAX: 2600 kgs  
 Waga: 200 g



**BP-7204F**  
**Double Becket**  
 Max Lina: 12mm  
 SWL : 1300 kgs  
 MAX: 2600 kgs  
 Waga: 220 g



**BP-7205F**  
**Triple**  
 Max Lina: 12mm  
 SWL : 1500 kgs  
 MAX: 3000 kgs  
 Waga: 282 g



**BP-7219F**  
**Fiddle**  
 Max Lina: 12mm  
 SWL : 1000 kgs  
 MAX: 2000 kgs  
 Waga: 167 g



**BP-7220F**  
**Single Becket Cleat**  
 Max Lina: 12mm  
 SWL : 1000 kgs  
 MAX: 2000 kgs  
 Waga: 178 g



**BP-7211F**  
**Single Becket Cleat**  
 Max Lina: 12mm  
 SWL : 1000 kgs  
 MAX: 2000 kgs  
 Waga: 252 g



**BP-7211FE**  
**Single Becket Angle Cleat**  
 Max Lina: 12mm  
 SWL : 1000 kgs  
 MAX: 2000 kgs  
 Waga: 260 g



**BP-0721F**  
**Single Fiddle Cleat**  
 Max Lina: 12mm  
 SWL : 1000 kgs  
 MAX: 2000 kgs  
 Waga: 273 g



**BP-0721FE**  
**Single Fiddle Angle Cleat**  
 Max Lina: 12mm  
 SWL : 1000 kgs  
 MAX: 2000 kgs  
 W eight: 281 g





**BP-7222F**  
**Triple Fiddle**  
 Max Lina: 12mm  
 SWL : 1000 kgs  
 MAX: 2000 kgs  
 Waga: 285 g



**BP-0722FE**  
**Single Fiddle**  
 Max Lina: 12mm  
 SWL : 1000 kgs  
 MAX: 2000 kgs  
 Waga: 293 g



**BP-7212F**  
**Triple**  
 Max Lina: 12mm  
 SWL : 1500 kgs  
 MAX: 3000 kgs  
 Waga: 395 g



**BP-7212FE**  
**Single Fiddle**  
 Max Lina: 12mm  
 SWL : 1500 kgs  
 MAX: 3000 kgs  
 Waga: 406 g



**BP-7213F**  
**Triple**  
 Max Lina: 12mm  
 SWL : 1500 kgs  
 MAX: 3000 kgs  
 Waga: 416 g



**BP-7213FE**  
**Triple**  
 Max Lina: 12mm  
 SWL : 1500 kgs  
 MAX: 3000 kgs  
 Waga: 426 g



## Seria 90mm

90mm blocks can handle extremely high loads. They are typically used for halyard tuning, mainsheet systems, mast foot, masthead, and boom vang.



**BP-0901F**  
**Single Block**  
Max Lina: 14mm  
SWL : 1500 kgs  
MAX: 3000 kgs  
Waga: 465 g



**BP-0907F**  
**Toggle Head**  
Max Lina: 14mm  
SWL : 1500 kgs  
MAX: 3000 kgs  
Waga: 415 g



**BP-0902F**  
**Single Becket**  
Max Lina: 14mm  
SWL : 1500 kgs  
MAX: 3000 kgs  
Waga: 525 g



**BP-0903F**  
**Double**  
Max Lina: 14mm  
SWL : 1950 kgs  
MAX: 3900 kgs  
Waga: 705 g



**BP-0904F**  
**Double Becket**  
Max Lina: 14mm  
SWL : 1950 kgs  
MAX: 3900 kgs  
Waga: ? g



**BP-0905F**  
**Triple**  
Max Lina: 14mm  
SWL : 2250 kgs  
MAX: 4500 kgs  
Waga: 970 g



**BP-0919F**  
**Fiddle**  
Max Lina: 14mm  
SWL : 1500 kgs  
MAX: 3000 kgs  
Waga: 611 g



**BP-0920F**  
**Single Becket Cleat**  
Max Lina: 14mm  
SWL : 1500 kgs  
MAX: 3000 kgs  
Waga: 658 g



**BP-0922F**  
**Single Becket Cleat**  
Max Lina: 14mm  
SWL : 1500 kgs  
MAX: 3000 kgs  
Waga: 850 g



**BP-0922FE**  
**Single Becket Angle Cleat**  
Max Lina: 14mm  
SWL : 1500 kgs  
MAX: 3000 kgs  
Waga: 856 g





# Bloki Mini ze stali 316

Tersma's smallest block is ideal for controlling lines on dinghies. These 16mm stainless steel blocks feature a self-contained stainless steel ball bearing system for smooth rotation. The sideplates are constructed from 316 stainless steel, ensuring long-term durability and a maximum working load.



**SB-1601F**  
**Single**  
 Max Lina: 4mm  
 SWL : 120 kgs  
 MAX: 550 kgs  
 Waga: 465 g



**SB-1602F**  
**Toggle Head**  
 Max Lina: 4mm  
 SWL : 120 kgs  
 MAX: 550 kgs  
 Waga: 415 g



**SB-1607F**  
**Single Becket**  
 Max Lina: 4mm  
 SWL : 120 kgs  
 MAX: 550 kgs  
 Waga: 525 g



**SB-1610F**  
**Double**  
 Max Lina: 4mm  
 SWL : 120 kgs  
 MAX: 550 kgs  
 Waga: 705 g



**SB-1614F**  
**Double Becket**  
 Max Lina: 4mm  
 SWL : 120 kgs  
 MAX: 550 kgs  
 Waga: ? g



**SB-1615F**  
**Triple**  
 Max Lina: 4mm  
 SWL : 120 kgs  
 MAX: 550 kgs  
 Waga: 970 g



**SB-1616F**  
**Fiddle**  
 Max Lina: 4mm  
 SWL : 120 kgs  
 MAX: 550 kgs  
 Waga: 611 g



**SB-1603F**  
**Single Becket Cleat**  
 Max Lina: 4mm  
 SWL : 120 kgs  
 MAX: 550 kgs  
 Waga: 658 g



**SB-1604F**  
**Single Becket Cleat**  
 Max Lina: 14mm  
 SWL : 120 kgs  
 MAX: 550 kgs  
 Waga: 850 g



**SB-1605F**  
**Single Becket Angle Cleat**  
 Max Lina: 14mm  
 SWL : 120 kgs  
 MAX: 550 kgs  
 Waga: 856 g





**SB-1606F**  
**Fiddle**  
Max Lina: 4mm  
SWL : 120 kgs  
MAX: 550 kgs  
Waga: 611 g



**SB-1613F**  
**Single Bucket Cleat**  
Max Lina: 4mm  
SWL : 120 kgs  
MAX: 550 kgs  
Waga: 658 g



**SB-1608F**  
**Single Bucket Cleat**  
Max Lina: 14mm  
SWL : 120 kgs  
MAX: 550 kgs  
Waga: 850 g



**SB-1609F**  
**Single Bucket Angle Cleat**  
Max Lina: 14mm  
SWL : 120 kgs  
MAX: 550 kgs  
Waga: 856 g



**SB-1611F**  
**Single Bucket Cleat**  
Max Lina: 14mm  
SWL : 120 kgs  
MAX: 550 kgs  
Waga: 850 g



**SB-1612F**  
**Single Bucket Angle Cleat**  
Max Lina: 14mm  
SWL : 120 kgs  
MAX: 550 kgs  
Waga: 856 g



## Seria 22mm

22mm blocks are compact and lightWaga. The block runs on two races of stainless steel ball bearings for smooth rotation and is made with 316 stainless steel sideplates for added strength and durability.



### SB-2201F

#### Single

Max Lina: 4mm  
SWL : 120 kgs  
MAX: 550 kgs  
Waga: 13 g



### SB-2202F

#### Single Becket

Max Lina: 4mm  
SWL : 120 kgs  
MAX: 550 kgs  
Waga: 17 g



### SB-2207F

#### Toggle Head Becket

Max Lina: 4mm  
SWL : 120 kgs  
MAX: 550 kgs  
Waga: 16 g



### SB-2210F

#### Single Shackle

Max Lina: 4mm  
SWL : 120 kgs  
MAX: 550 kgs  
Waga: 24 g



### SB-2215F

#### Stand

Max Lina: 4mm  
SWL : 120 kgs  
MAX: 550 kgs  
Waga: 18 g



### SB-2227F

#### Single Shackle

Max Lina: 4mm  
SWL : 120 kgs  
MAX: 550 kgs  
Waga: 22 g



### SB-2228F

#### Single Becket Cleat

Max Lina: 4mm  
SWL : 120 kgs  
MAX: 550 kgs  
Waga: 25 g



### SB-2209F

#### Cheek

Max Lina: 4mm  
SWL : 180 kgs  
MAX: 825 kgs  
Waga: 20 g



### SB-2201FR

#### Fiddle

Max Lina: 4mm  
SWL : 120 kgs  
MAX: 550 kgs  
Waga: 16 g



### SB-2202FR

#### Single Becket Cleat

Max Lina: 4mm  
SWL : 156 kgs  
MAX: 715 kgs  
Waga: 20 g





**SB-2217F**  
**Fiddle V Cam**  
 Max Lina: 4mm  
 SWL : 120 kgs  
 MAX: 550 kgs  
 Waga: 50 g



**SB-2218F**  
**Fiddle V Cam Becket**  
 Max Lina: 4mm  
 SWL : 120 kgs  
 MAX: 550 kgs  
 Waga: 54 g



**SB-2208F**  
**Deck Exit**  
 Max Lina: 4mm  
 SWL : 120 kgs  
 MAX: 550 kgs  
 Waga: 23 g



**SB-2216F**  
**Vertical**  
 Max Lina: 4mm  
 SWL : 120 kgs  
 MAX: 550 kgs  
 Waga: 26 g



**SB-2211F**  
**Fiddle**  
 Max Lina: 4mm  
 SWL : 120 kgs  
 MAX: 550 kgs  
 Waga: 24 g



**SB-2214F**  
**Connected**  
 Max Lina: 4mm  
 SWL : 120 kgs  
 MAX: 550 kgs  
 Waga: 24 g



**SB-2203F**  
**Double**  
 Max Lina: 4mm  
 SWL : 156 kgs  
 MAX: 715 kgs  
 Waga: 35 g



**SB-2204F**  
**Double Becket**  
 Max Lina: 4mm  
 SWL : 180 kgs  
 MAX: 825 kgs  
 Waga: 38 g



**SB-2205F**  
**Triple**  
 Max Lina: 4mm  
 SWL : 180 kgs  
 MAX: 825 kgs  
 Waga: 51 g



**SB-2206F**  
**Triple Becket**  
 Max Lina: 4mm  
 SWL : 180 kgs  
 MAX: 825 kgs  
 Waga: 56 g



**SB-2212F**  
**Triple Cam Cleat**  
 Max Lina: 4mm  
 SWL : 180 kgs  
 MAX: 825 kgs  
 Waga: 94 g



**SB-2213F**  
**Triple Becket Cam Cleat**  
 Max Lina: 4mm  
 SWL : 180 kgs  
 MAX: 825 kgs  
 Waga: 97 g







# Dinghy Blocks



Tersma dinghy blocks include a toggle head and a shackle ratchet block for the mainsheet, as well as ball bearing and plain bearing blocks for the OP class and other dinghies. The hook blocks can be used to easily adjust the halyard.



**OS-1601F**  
**Hook (B)**  
 Max Lina: 5mm  
 SWL : 100 kgs  
 MAX: 200 kgs  
 Waga: 8 g



**OS-1602F**  
**Hook (S)**  
 Max Lina: 5mm  
 SWL : 100 kgs  
 MAX: 200 kgs  
 Waga: 10 g



**OS-0001F**  
**Snap Shackle**  
**40mm Single (Rope)**  
 Max Lina: 8mm  
 SWL : 230 kgs  
 MAX: 800 kgs  
 Waga: 49 g



**OS-0002F**  
**Single Shackle**  
**40mm Single**  
 Max Lina: 8mm  
 SWL : 230 kgs  
 MAX: 800 kgs  
 Waga: 78 g



**OS-0003F**  
**Stand**  
 Max Lina: 6mm  
 SWL : 160 kgs  
 MAX: 500 kgs  
 Waga: 18 g



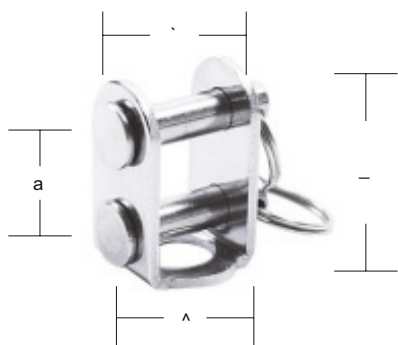
**OS-0004F**  
**Single Shackle**  
 Max Lina: 4mm  
 SWL : 120 kgs  
 MAX: 550 kgs  
 Waga: 22 g



**OS-0005F**  
**Single Becket Cleat**  
 Max Lina: 4mm  
 SWL : 120 kgs  
 MAX: 550 kgs  
 Waga: 25 g



**XRA-5501F**  
**55mm Ratchet Block**  
 Max Lina: 10mm  
 SWL : 450 kgs  
 MAX: 1394 kgs  
 Waga: 60 g



**CB-1212F**  
**OS-1214F**  
**OS-1216F**

Items	A	B	C	Pin1	Pin2	D
CB-1212F	9.4mm	23.5mm	11.7mm	ø5mm	ø5mm	7.1mm
CB-1214F	12.8mm	27.5mm	10.7mm	ø5mm	ø6.2mm	9.1mm
CB-1216F	15.5mm	39mm	18mm	ø8mm	ø8mm	13.3mm





# Hercules Blocks

Hercules blocks are specialized made for cruising boats to handle extremely high load. Available in Aluminum or polished stainless steel. Hercules single and fiddle blocks are ideal for vang or mainsheet systems. Foot models with jammers can be used on deck to guide the line and secure the sheet.



## AL I SS Sideplates

One piece machine made Aluminum or Stainless steel sideplate sets perfect balance between Waga and strength. All aluminum parts are black anodized aluminum for long-term use.

## THE COMPOSITE SHEAVE

The Derlin sheave runs on sleeve bearing to handle extremely high loads.



## Durability

All materials are UV resistant and anti-corrosion for maximum protection and long lasting durability.





**ALC-5701F**  
**Single**  
 Max Lina: 16mm  
 SWL : 1100 kgs  
 MAX: 2000 kgs  
 Waga: 50 g



**ALC-5702F**  
**Single Becket**  
 Max Lina: 16mm  
 SWL : 1100 kgs  
 MAX: 2000 kgs  
 Waga: 54 g



**ALC-5709F**  
**Mast**  
 Max Lina: 16mm  
 SWL : 1100 kgs  
 MAX: 2000 kgs  
 Waga: 23 g



**ALC-5708F**  
**Padeye**  
 Max Lina: 16mm  
 SWL : 1100 kgs  
 MAX: 2000 kgs  
 Waga: 26 g



**ALC-5713F**  
**Padeye Bolt**  
 Max Lina: 16mm  
 SWL : 1100 kgs  
 MAX: 2000 kgs  
 Waga: 24 g



**ALC-5715F**  
**Foot Jammer**  
 Max Lina: 16mm  
 SWL : 1100 kgs  
 MAX: 2000 kgs  
 Waga: 24 g



**ALC-5710F**  
**Foot**  
 Max Lina: 16mm  
 SWL : 1100 kg  
 MAX: 2000 kgs  
 Waga: 51 g



**SSC-5701F**  
**Single**  
 Max Lina: 16mm  
 SWL : 1100 kgs  
 MAX: 2000 kgs  
 Waga: 316 g



**SSC-5702F**  
**Single Becket**  
 Max Lina: 16mm  
 SWL : 1100 kgs  
 MAX: 2000 kgs  
 Waga: 362 g



**SSC-5709F**  
**Padeye**  
 Max Lina: 16mm  
 SWL : 1100 kgs  
 MAX: 2000 kgs  
 Waga: 208 g



**SSC-5710F**  
**Foot**  
 Max Lina: 16mm  
 SWL : 1100 kgs  
 MAX: 2000 kgs  
 Waga: 203 g



**SSC-5715F**  
**Foot Jammer**  
 Max Lina: 16mm  
 SWL : 1100 kgs  
 MAX: 2000 kgs  
 Waga: 253 g



## Seria 75mm



### ALC-7501F

#### Single

Max Lina: 16mm  
SWL : 1600 kgs  
MAX: 3200 kgs  
Waga: 352 g



### ALC-7502F

#### Single Becket

Max Lina: 16mm  
SWL : 1600 kgs  
MAX: 3200 kgs  
Waga: 369 g



### ALC-7519F

#### Fiddle

Max Lina: 16mm  
SWL : 1600 kgs  
MAX: 3200 kgs  
Waga: 426 g



### ALC-7520F

#### Fiddle Becket

Max Lina: 16mm  
SWL : 1600 kgs  
MAX: 3200 kgs  
Waga: 460 g



### ALC-7522F

#### Fiddle Becket Aluminum Cleat

Max Lina: 16mm  
SWL : 1600 kgs  
MAX: 3200 kgs  
Waga: 695 g



### ALC-7509F

#### Mast

Max Lina: 16mm  
SWL : 1600 kgs  
MAX: 3200 kgs  
Waga: 228 g



### ALC-7508F

#### Padeye

Max Lina: 16mm  
SWL : 1600 kg  
MAX: 3200 kgs  
Waga: 236 g



### ALC-7513F

#### Padeye Bolt

Max Lina: 16mm  
SWL : 1600 kgs  
MAX: 3200 kgs  
Waga: 242 g



### ALC-7510F

#### Single Becket

Max Lina: 16mm  
SWL : 1600 kgs  
MAX: 2100 kgs  
Waga: 297 g



### ALC-7515F

#### Padeye

Max Lina: 16mm  
SWL : 1600 kgs  
MAX: 3200 kgs  
Waga: 322 g



### SSC-7501F

#### Single

Max Lina: 16mm  
SWL : 1600 kgs  
MAX: 3200 kgs  
Waga: 203 g



### SSC-7502F

#### Single Becket

Max Lina: 16mm  
SWL : 1600 kgs  
MAX: 3200 kgs  
Waga: 253 g



**SSC-7519F**

**Single**

Max Lina: 16mm  
 SWL : 1600 kgs  
 MAX: 3200 kgs  
 Waga: 352 g



**SSC-7520F**

**Single Becket**

Max Lina: 16mm  
 SWL : 1600 kgs  
 MAX: 3200 kgs  
 Waga: 369 g



**ALC-7508F**

**Fiddle**

Max Lina: 16mm  
 SWL : 1600 kgs  
 MAX: 3200 kgs  
 Waga: 426 g



**ALC-7509F**

**Fiddle Becket**

Max Lina: 16mm  
 SWL : 1600 kgs  
 MAX: 3200 kgs  
 Waga: 460 g



**ALC-7510F**

**Fiddle Becket  
 Aluminum Cleat**

Max Lina: 16mm  
 SWL : 1600 kgs  
 MAX: 3200 kgs  
 Waga: 695 g



**ALC-7515F**

**Mast**

Max Lina: 16mm  
 SWL : 1600 kgs  
 MAX: 3200 kgs  
 Waga: 228 g



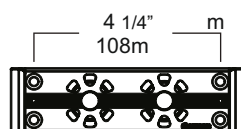


# Organizery pokładowe ALU

38mm

Tersma deck organizers are designed with maximum protection in mind, featuring hardcoat anodized aluminum plates that are highly resistant to UV and corrosion. Rolki equipped with enclosed ball bearings for reduced friction.

All sizes are stackable, allowing for double and triple configurations. These small and midrange boat organizers are particularly well-suited for halyards, control lines, reef lines, and pole lifts.

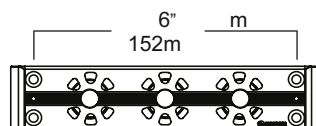


## DE-3702F

2 Rolki

Max Lina: 10mm

Waga: 135 g

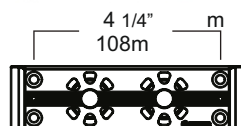


## DE-3703F

3 Rolki

Max Lina: 10mm

Waga: 182 g

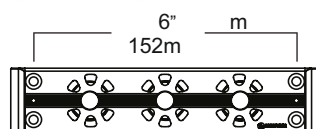


## DE-3722F

Podwójne 2 Rolki

Max Lina: 10mm

Waga: 225 g

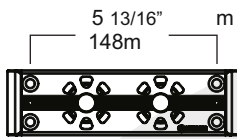


## DE-3723F

Podwójne 3 Rolki

Max Lina: 10mm

Waga: 305 g

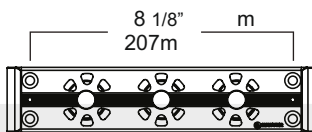


**DE-0502F**

**2 Rolki**

Max Lina: 16mm

Waga: 263 g

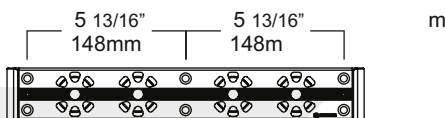


**DE-0503F**

**3 Rolki**

Max Lina: 16mm

Waga: 357 g

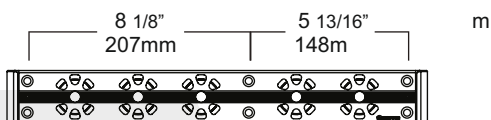


**DE-0504F**

**4 Rolki**

Max Lina: 16mm

Waga: 485 g

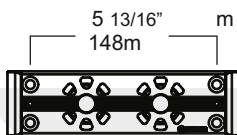


**DE-0505F**

**5 Rolek**

Max Lina: 16mm

Waga: 305 g

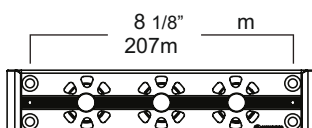


**DE-0522F**

**Podwójne 2 Rolki**

Max Lina: 10mm

Waga: 225 g



**DE-0523F**

**Podwójne 3 Rolki**

Max Lina: 10mm

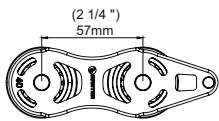
Waga: 305 g



# Organizery pokładowe ALU

40mm

Tersma Aluminum organizers feature black hardcoat anodized Aluminum sideplates and Rolki. Stainless steel bush with Derlin ball bearing is for smooth rotation and low friction. All Aluminum parts are hardcoat anodized for maximum protection. Aluminum deck organizers come in different configurations from 2 Rolki to 6 Rolki.

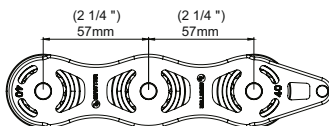


**ALC-0402F**

**2 Rolki**

Max Lina: 12mm

Waga: 108 g

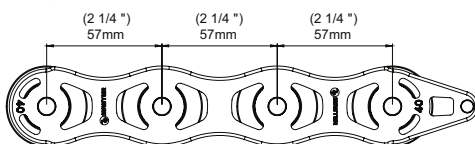


**ALC-0403F**

**3 Rolki**

Max Lina: 12mm

Waga: 294 g

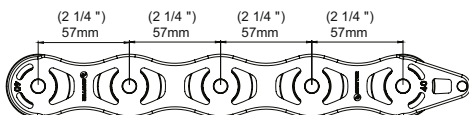


**ALC-0404F**

**4 Rolki**

Max Lina: 12mm

Waga: 218 g

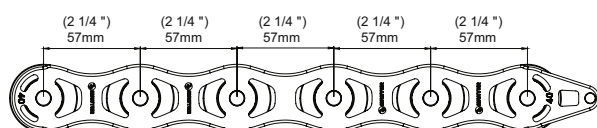


**ALC-0405F**

**5 Rolek**

Max Lina: 12mm

Waga: 272 g

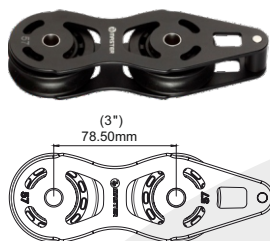


**ALC-0406F**

**6 Rolek**

Max Lina: 12mm

Waga: 325 g

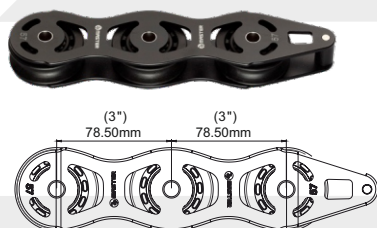


## ALC-0502F

**2 Rolki**

Max Lina: 16mm

Waga: 208 g

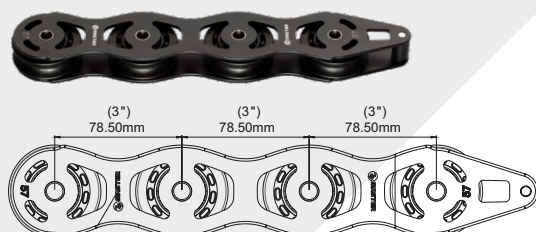


## ALC-0503F

**3 Rolki**

Max Lina: 16mm

Waga: 337 g

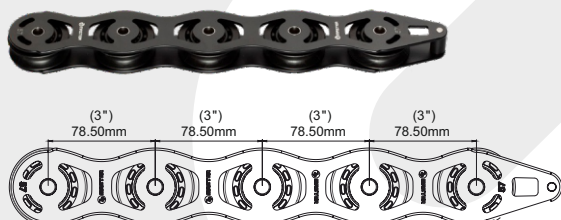


## ALC-0504F

**4 Rolki**

Max Lina: 16mm

Waga: 442 g

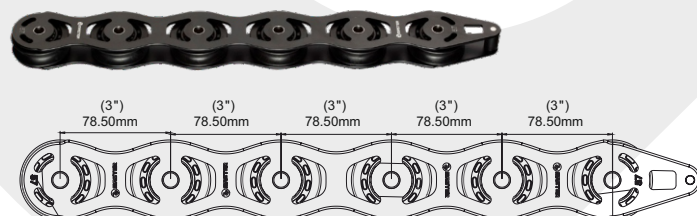


## ALC-0505F

**5 Rolek**

Max Lina: 16mm

Waga: 554 g

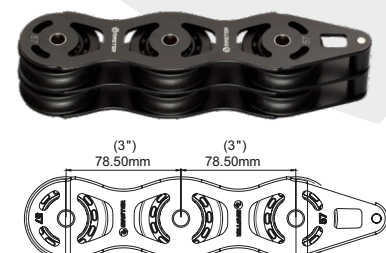


## ALC-0506F

**6 Rolek**

Max Lina: 16mm

Waga: 667 g



## ALC-0523F

**Podwójne 3 Rolki**

Max Lina: 16mm

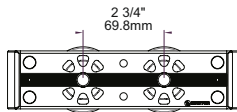
Waga: 577 g



# Crusing Deck Organizers

57mm

Tersma Crusing deck organizers feature black hardcoat anodized Aluminum sideplates and Rolki. Stainless steel bush with Derlin ball bearing is for smooth rotation and low friction. All Aluminum parts are hardcoat anodized for maximum protection.

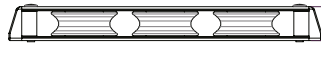
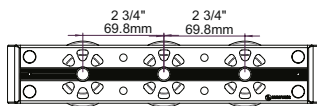


## DE-5702F

2 Rolki

Max Lina: 12mm

Waga: 613 g

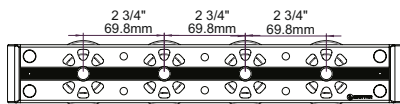


## DE-5703F

3 Rolki

Max Lina: 12mm

Waga: 886 g

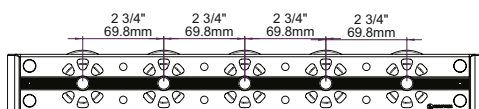


## DE-5704F

4 Rolki

Max Lina: 12mm

Waga: 1119 g

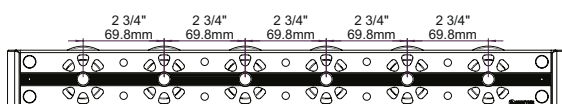


## DE-5705F

5 Rolek

Max Lina: 12mm

Waga: 1377 g



## DE-5706F

6 Rolek

Max Lina: 12mm

Waga: 1628 g



**HL-0501F**  
**Upright Lead**  
 Max Lina: 10mm  
 SWL : 1600 kgs  
 MAX: 2500 kgs  
 Waga: 150 g



**HL-0701F**  
**Upright Lead**  
 Max Lina: 12mm  
 SWL : 2300 kgs  
 MAX: 4600 kgs  
 Waga: 320 g



**HL-4501F**  
**Fiddle**  
 Max Lina: 10mm  
 SWL : 1600 kgs  
 MAX: 3200 kgs  
 Waga: 426 g



**HL-0502F**  
**Fiddle Becket**  
 Max Lina: 10mm  
 SWL : 1600 kgs  
 MAX: 3200 kgs  
 Waga: 460 g



**HL-0503F**  
**Double Halyard**  
 Max Lina: 10mm  
 SWL : 1600 kgs  
 MAX: 3200 kgs  
 Waga: 695 g



**HL-0504F**  
**Triple Halyard**  
 Max Lina: 10mm  
 SWL : 1600 kgs  
 MAX: 3200 kgs  
 Waga: 228 g



**FF-0502F**  
**Pivoting Lead**  
 Max Lina: 10mm  
 SWL : 1200 kg  
 MAX: 2500 kgs  
 Waga: 236 g



**FF-0702F**  
**Pivoting Lead**  
 Max Lina: 12mm  
 SWL : 1200 kgs  
 MAX: 2500 kgs  
 Waga: 242 g



**FF-0501F**  
**Pivoting Lead Cleat**  
 Max Lina: 10mm  
 SWL : 150 kgs (Cleat)  
 MAX: 350 kgs (Cleat)  
 Waga: 297 g



**HL-0701F**  
**Pivoting Lead Cleat**  
 Max Lina: 12mm  
 SWL : 150 kgs (Cleat)  
 MAX: 350 kgs (Cleat)  
 Waga: 322 g



**FF-0501FE**  
**Pivoting Lead Anlge Cleat**  
 Max Lina: 10mm  
 SWL : 150 kgs (Cleat)  
 MAX: 350 kgs (Cleat)  
 Waga: 285 g



**FF-0701FE**  
**Pivoting Lead Angle Cleat**  
 Max Lina: 12mm  
 SWL : 150 kgs (Cleat)  
 MAX: 350 kgs (Cleat)  
 Waga: 454 g



# Knagi i osprzęt



## Two Race Ball Bearing

Two race-free running Delrin ball bearings and a constant tension spring provide quick and responsive jaw opening and closing.

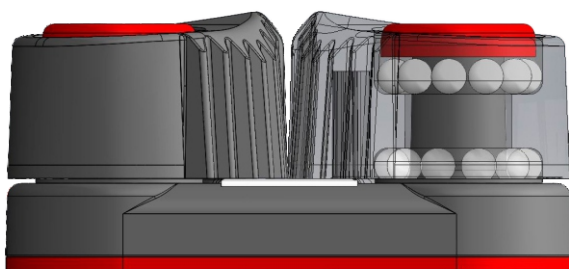
Tersma ball bearing cleats offer a wide range for versatile use. Quick-response open jaws secure lines rapidly and release them instantly. Jaws are available in all sizes to accommodate different Linas.

Angle fairlead cleat kits enable cleats to trim and release lines at large angles.

## Strong Materials

LightWaga composite cleats are designed for racing where Waga is crucial. They are available in small and medium sizes.

Aluminum cleats feature a hardcoat anodized aluminum base and jaws. The smooth surface enhances line engagement and release. These cleats are available in small, medium, and large sizes.



## Durability

All materials are UV-resistant and corrosion-resistant for maximum protection and long-lasting durability.

## Szczęki knagi zaciskowej

Konstrukcja knag oraz ich kształt zapewnia doskonałe trzymanie bez uszkodzenia liny

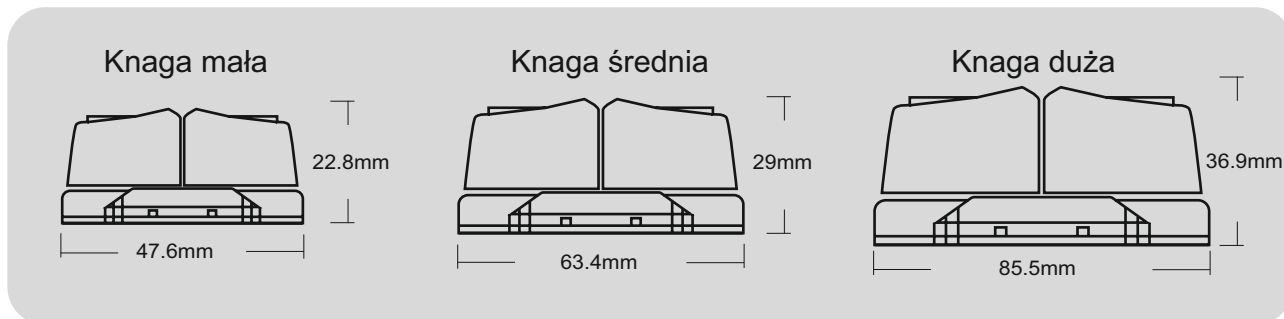





**BC-0601F**  
**Knaga mała**  
 Max Lina: 3~6mm  
 SWL : 80 kgs  
 MAX: 160 kgs  
 Waga: 16 g



**BC-1001F**  
**Knaga średnia**  
 Max Lina: 3~12mm  
 SWL : 100 kgs  
 MAX: 200 kgs  
 Waga: 36 g




**BC-0611F**  
**Knaga ALU mała**  
 Max Lina: 3~6mm  
 SWL : 100 kgs  
 MAX: 200 kgs  
 Waga: 30 g



**BC-1201F**  
**Knaga ALU średnia**  
 Max Lina: 3~12mm  
 SWL : 150 kgs  
 MAX: 300 kgs  
 Waga: 68 g



**BC-1601F**  
**Knaga ALU duża**  
 Max Lina: 6~16  
 SWL : 250 kgs  
 MAX: 500 kgs  
 Waga: 148 g







### BC-0602F

**Knaga mała  
z nakładką**

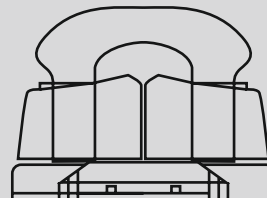
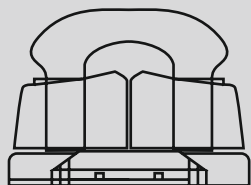
Max Lina: 3~6mm  
SWL : 80 kgs  
MAX: 160 kgs  
Waga: 36 g



### BC-1002F

**Knaga średnia  
z nakładką**

Max Lina: 3~12mm  
SWL : 100 kgs  
MAX: 200 kgs  
Waga: 69 g



### BC-0604F

**Knaga mała  
z ???**

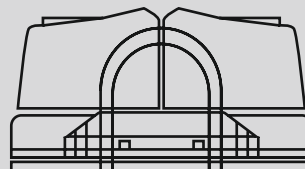
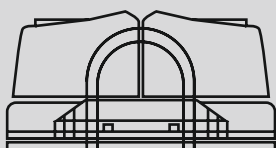
Max Lina: 3~6mm  
SWL : 80 kgs  
MAX: 160 kgs  
Waga: 24 g



### BC-1004F

**Medium Cleat  
Angle Fairlead**

Max Lina: 3~12mm  
SWL : 100 kgs  
MAX: 200 kgs  
Waga: 50 g





**BC-0603F**  
Nadstawka knagi małej

**BC-1003F**  
Nadstawka knagi średniej



**BC-06018**  
Nadstawka knagi małej

**BC-10018**  
Nadstawka knagi średniej



**BC-0605F**  
Uchwyt knagi małej

**BC-1005F**  
Uchwyt knagi średniej



**SB-16609**  
Nadstawka knagi małej

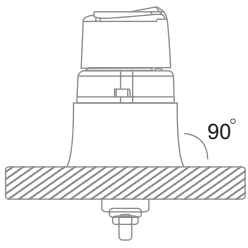


**TC-22608**  
Nadstawka knagi średniej



**ALC-75601**  
Nadstawka knagi dużej

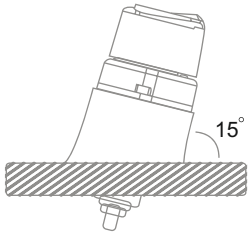




**BC-06021**  
Podstawa knagi małej



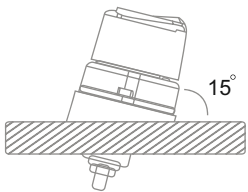
**BC-10021**  
Medium Cleat Riser



**BC-06022**  
Podstawa knagi małej 15'



**BC-10022**  
Podstawa knagi średniej 15'



**BC-06023**  
Podstawa knagi małej 15'



**BC-10023**  
Podstawa knagi średniej 15'



**BC-06104F**  
Akcesoria knagi małej i średniej

Tersma swivel bases feature hardcoat anodized aluminum for maximum protection against UV and corrosion. Delrin® ball bearings provide smooth swiveling even under static high loads. A stand-up spring and a U-shaped adaptor allow the base to attach blocks.

swivel bases are perfect for main and jib sheets on small boats.



**CB-1201F**  
**Podstawa ruchoma**  
 Max Lina: 3-12mm  
 SWL : 100 kgs  
 MAX: 200 kgs  
 Waga: 340 g



**CB-1201FE**  
**Podstawa ruchoma**  
 Max Lina: 3-12mm  
 SWL : 100 kgs  
 MAX: 200 kgs  
 Waga: 344 g



**CB-1202F**  
**Podstawa ruchoma**  
 Max Lina: 3-12mm  
 SWL : 100 kg  
 MAX: 200 kgs  
 Waga: 329 g



**CB-1202FE**  
**Podstawa ruchoma**  
 Max Lina: 3-12mm  
 SWL : 100 kgs  
 MAX: 200 kgs  
 Waga: 353 g



**CB-0602F**  
**Podstawa ruchoma**  
 Max Lina: 3-6mm  
 SWL : 80 kgs  
 MAX: 160 kgs  
 Waga: 95 g



**CB-1003F**  
**Podstawa ruchoma**  
 Max Lina: 3-12mm  
 SWL : 100 kgs  
 MAX: 200 kgs  
 Waga: 100 g



**CB-1002F**  
**Podstawa ruchoma**  
 Max Lina: 3-12mm  
 SWL : 100 kgs  
 MAX: 200 kgs  
 Waga: 192 g



**CB-1002FE**  
**Podstawa ruchoma**  
 Max Lina: 3-12mm  
 SWL : 100 kgs  
 MAX: 200 kgs  
 Waga: 196 g





MASTER

20x14

MASTER

14x10

MASTER

20x14

MASTER

10x7



# Przelotki i ringi



Lead ring sizes range from 8mm to 28mm holes. Lead rings provide an excellent solution when a ball bearing is not required. They can be used for jib

lead rings are made of lightWaga, hardcoat anodized Aluminum for optimal performance.



**LR-08**  
**8mm Ring**  
Max Lina: 8mm  
Waga: 3 g



**LR-10**  
**10mm Ring**  
Max Lina: 10mm  
Waga: 7 g



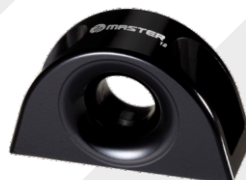
**LR-14**  
**14mm Ring**  
Max Lina: 14mm  
Waga: 14 g



**LR-20**  
**20mm Ring**  
Max Lina: 20mm  
Waga: 43 g



**LR-28**  
**28mm Ring**  
Max Lina: 28mm  
Waga: 120 g



**LR-121**  
**12 Deck Lead Single**  
Max Lina: 12mm  
Waga: 29 g



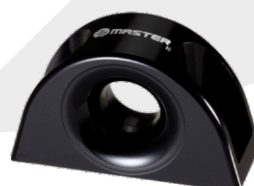
**LR-122**  
**12 Deck Lead Double**  
Max Lina: 12mm  
Waga: 53 g



**LR-123**  
**12 Deck Lead Triple**  
Max Lina: 12mm  
Waga: 76 g



**LR-124**  
**12 Deck Lead Quad**  
Max Lina: 12mm  
Waga: 97 g



**LR-161**  
**16 Deck Lead**  
Max Lina: 16mm  
Waga: 48 g





**LR-162**  
**16 Deck Lead**  
**Double**  
Max Lina: 16mm  
Waga: 89 g



**LR-163**  
**16 Deck Lead**  
**Triple**  
Max Lina: 16mm  
Waga: 126 g



**LR-164**  
**16 Deck Lead**  
Max Lina: 16mm  
Waga: 165 g



**12 Jib Lead**  
Waga: 74 g



**22 Jib Lead**  
Waga: 264 g





Tersma clutches are designed for easy engagement and quick release under static high loads. The internal mechanism is crafted from 316 stainless steel and anodized aluminum for long-term durability. The clutch body is made from an exclusive composite material with a UV stabilizer for maximum protection.



**XTC-04081F**  
**Pojedynczy**  
 Max Lina: 4-8mm  
 SWL : 180 kgs  
 MAX: 550 kgs  
 Waga: 430 g



**XTC-04082F**  
**Podwójny**  
 Max Lina: 4-8mm  
 SWL : 180 kgs  
 MAX: 550 kgs  
 Waga: 815 g



**XTC-04083F**  
**Potrójny**  
 Max Lina: 4-8mm  
 SWL : 180 kg  
 MAX: 550 kgs  
 Waga: 1200 g



**XTC-04084F**  
**Poczwórny**  
 Max Lina: 4-8mm  
 SWL : 180 kgs  
 MAX: 550 kgs  
 Waga: 1585 g



**XTC-08121F**  
**Pojedynczy**  
 Max Lina: 6-14mm  
 SWL : 300 kgs  
 MAX: 600 kgs  
 Waga: 430 g



**XTC-08122F**  
**Podwójny**  
 Max Lina: 6-14mm  
 SWL : 300 kgs  
 MAX: 600 kgs  
 Waga: 815 g



**XTC-08123F**  
**Potrójny**  
 Max Lina: 6-14mm  
 SWL : 300 kgs  
 MAX: 600 kgs  
 Waga: 1200 g



**XTC-08124F**  
**Poczwórny**  
 Max Lina: 6-14mm  
 SWL : 300 kgs  
 MAX: 600 kgs  
 Waga: 1585 g



# Wózki szotowe

Wózki szotowe wykonane z anodyzowanego aluminium dla maksymalnej ochrony przed UV i korozją. Podwójny rząd kulek - minimalizacja tarcia.



**TC-2203F**  
22mm Pivoting Shackle



**TC-2202F**  
22mm Pivoting Shackle  
Toggle head



**TC-2204F**  
22mm Eyestraps  
Single Control Sheave



**GE-2201F**  
22mm Wózek  
szotowy/fok/genua  
średni



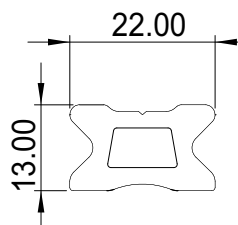
**GE-2202SF**  
22mm Wózek  
szotowy/fok/genua  
średni



**TC-22002F**



**EC-2213F**  
22mm Control End  
Double Sheave  
Small Aluminum Cleat



TC-22602DM-1m

TC-22602DM-1.2m

TC-22602DM-1.5m

TC-22602DM-2m



TC-22602G-1m

TC-22602G-1.2m

TC-22602G-1.5m

TC-22602G-2m

# Przedłużki steru



With a wide range of options, from Carbon Fiber to Aluminum alloy, Tersma tiller extensions provide an excellent steering experience for quick and precise response in ultimate sailing conditions.

## Hypalon® Grip

Cześć górna przedłużeń została pokryta Powłoką Hypalon o właściwościach wodoodpornych, jest odporna na UV i przeciw poślizgowa.

## Carbon Fiber & Aluminum Stick

Przedłużki występują w wersjach ALU - anodowanego aluminium oraz Fiber Carbon - maksymalnie skoncentrowanego włókna węglowego dla zapewnienie sztywności i wytrzymałości przy minimalnej wadze.



**TEC-1001**  
Universal joint

## Universalny łącznik

Łącznik przedłużeń został wykonany z odpornego na wodę, bardzo elastycznego, a zarazem wytrzymałego materiału. Konstrukcja łącznika pozwala na szybkie instalowanie, demontaż i wymianę przedłużeń



**TE-16016** 16mm  
Retaining Clip

**TE-16020** 20mm  
Retaining Clip







**TEA-1001**  
**60cm AL Extension**  
 Length: 60cm  
 Tube : 16mm  
 Fasten: M5  
 Waga: 212 g




**TEA-1002**  
**76cm AL Extension**  
 Length: 76cm  
 Tube : 16mm  
 Fasten: M5  
 Waga: 241 g



**TEA-1003**  
**84cm AL Extension**  
 Length: 84cm  
 Tube: 16mm  
 Fasten: M5  
 Waga: 249 g



**TEA-1004**  
**91cm AL Extension**  
 Length: 91cm  
 Tube:16mm  
 Fasten: M5  
 Waga: 269 g




**TEA-1005**  
**107cm AL Extension**  
 Length: 107cmm  
 Tube : 16mm  
 Fasten: M5  
 Waga: 297 g



**TEA-1006**  
**122cm AL Extension**  
 Length: 122cm  
 Tube : 16mm  
 Fasten: M5  
 Waga: 321 g




**TEC-1002**  
**60cm CF Extension**  
 Length: 60cm  
 Tube : 16mm  
 Fasten: M5  
 Waga: 181 g



**TEC-1003**  
**76cm CF Extension**  
 Length: 76cm  
 Tube : 16mm  
 Fasten: M5  
 Waga: 197 g



**TEC-1004**  
**84cm CF Extension**  
 Length: 84cm  
 Tube : 16mm  
 Fasten: M5  
 Waga: 181 g



**TEC-1005**  
**91cm CF Extension**  
 Length: 91cm  
 Tube: 16mm  
 Fasten: M5  
 Waga: 197 g



**TEC-1006**  
**107cm CF Extension**  
 Length: 107cm  
 Tube : 16mm  
 Fasten: M5  
 Waga: 236 g



**TEC-1007**  
**122cm CF Extension**  
 Length: 122cm  
 Tube : 16mm  
 Fasten: M5  
 Waga: 251 g







www.aquatech.fun



**MASTER**  
ahead of wind



**AQUATECH**  
tel.+48602713504, [www.aquatech.fun](http://www.aquatech.fun)  
[www.blokijachtowe.pl](http://www.blokijachtowe.pl)

